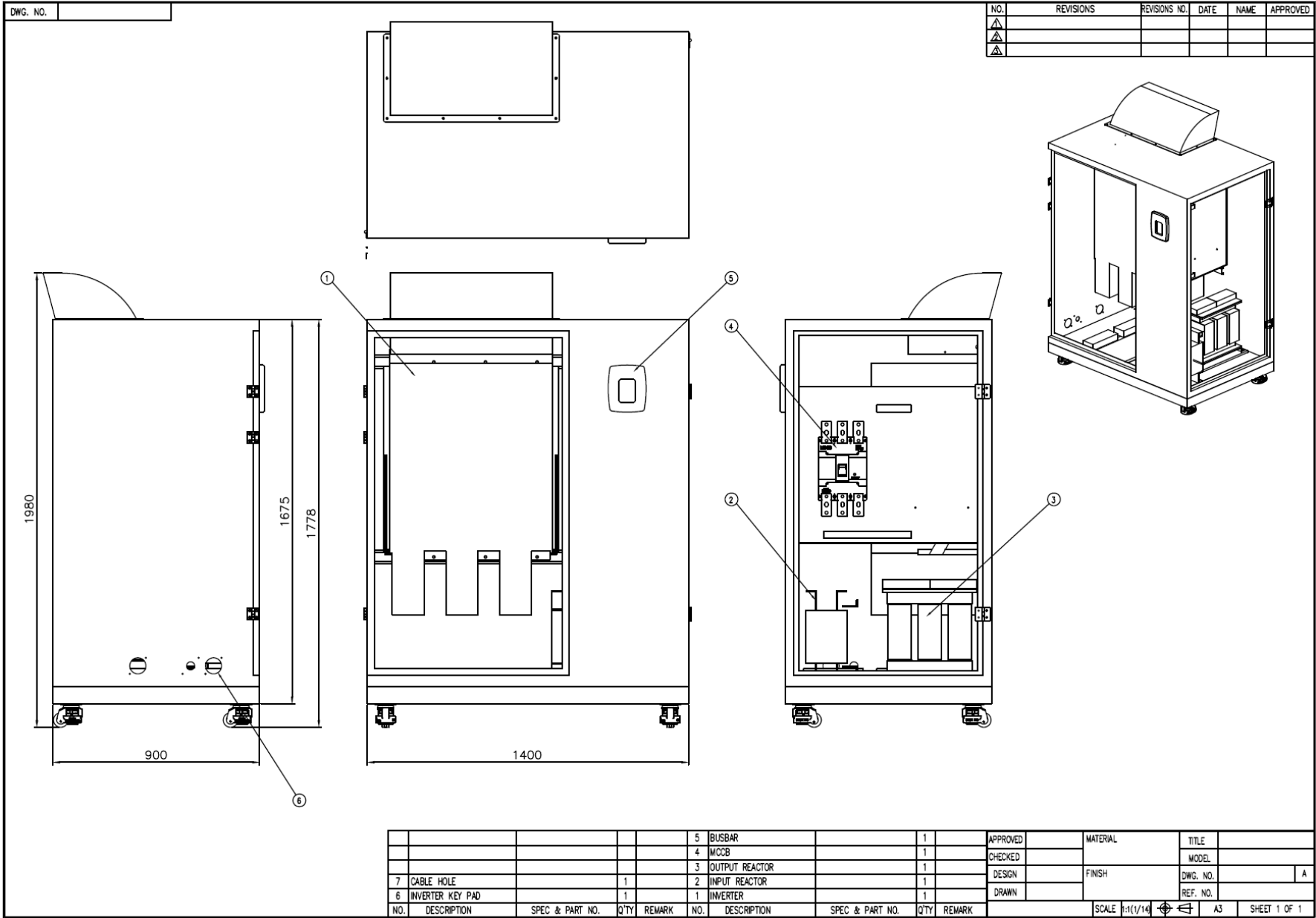
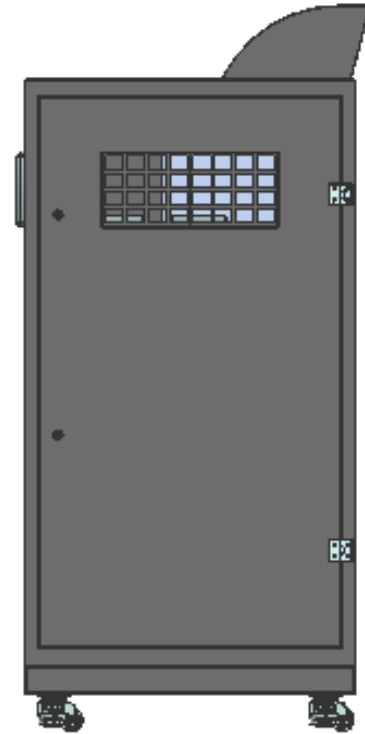
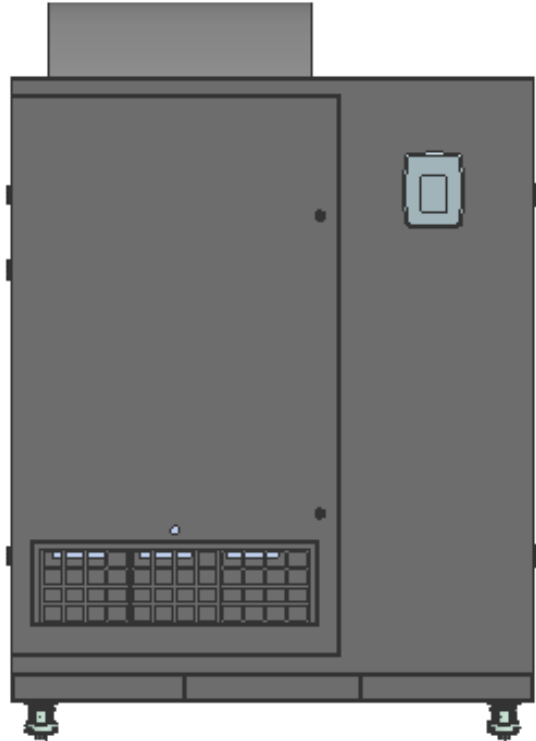
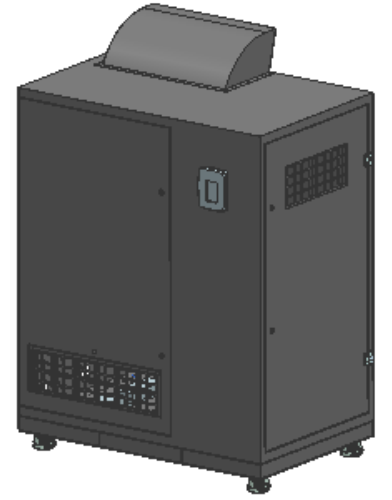
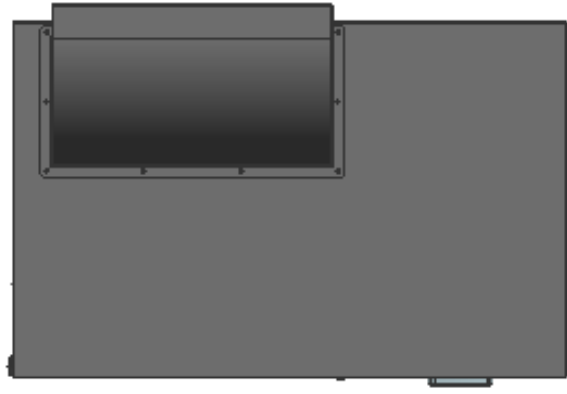


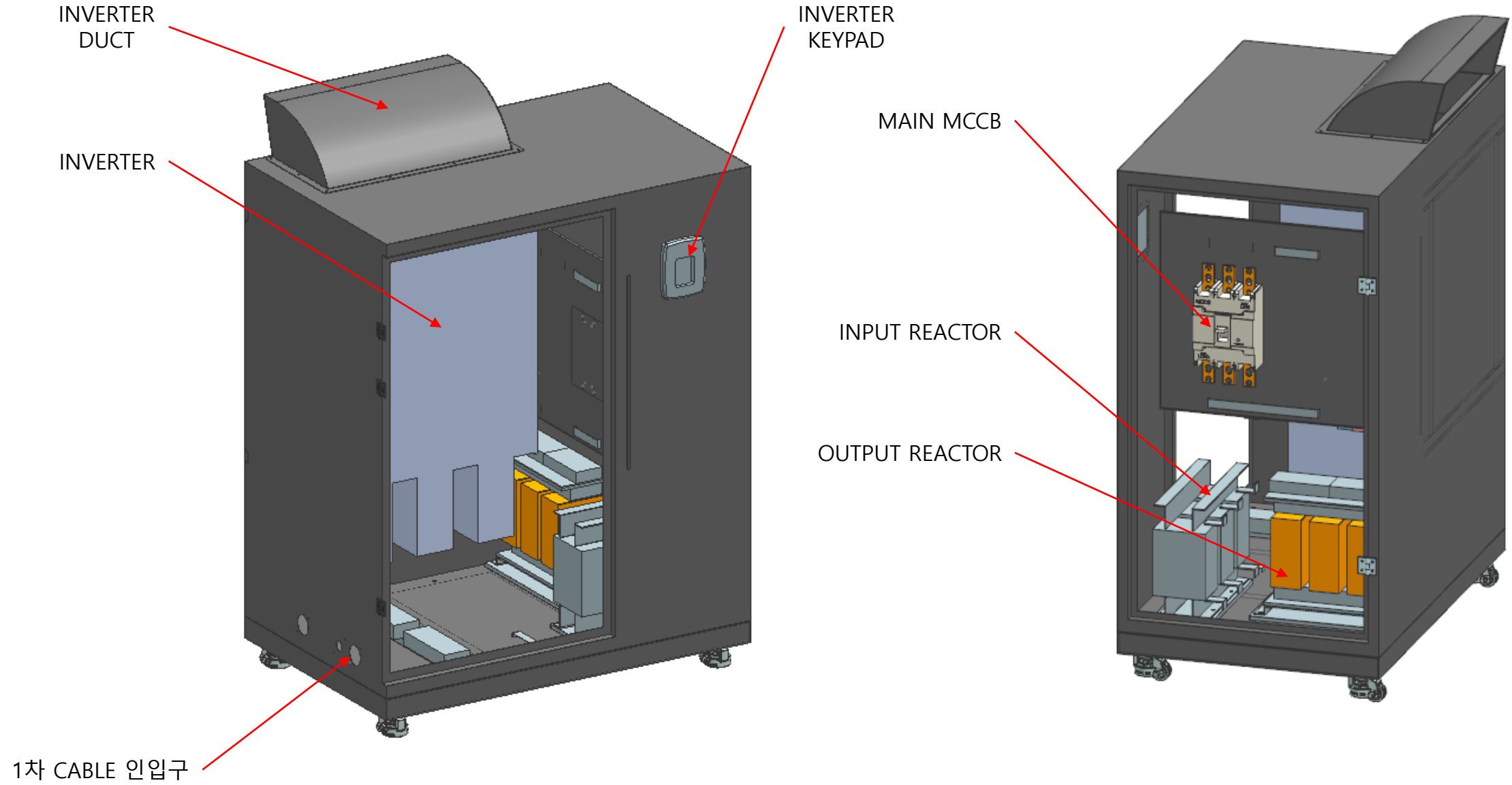
인버터 판넬 2D 도면



인버터 판넬 3D 도면



인버터 판넬 부품 명칭

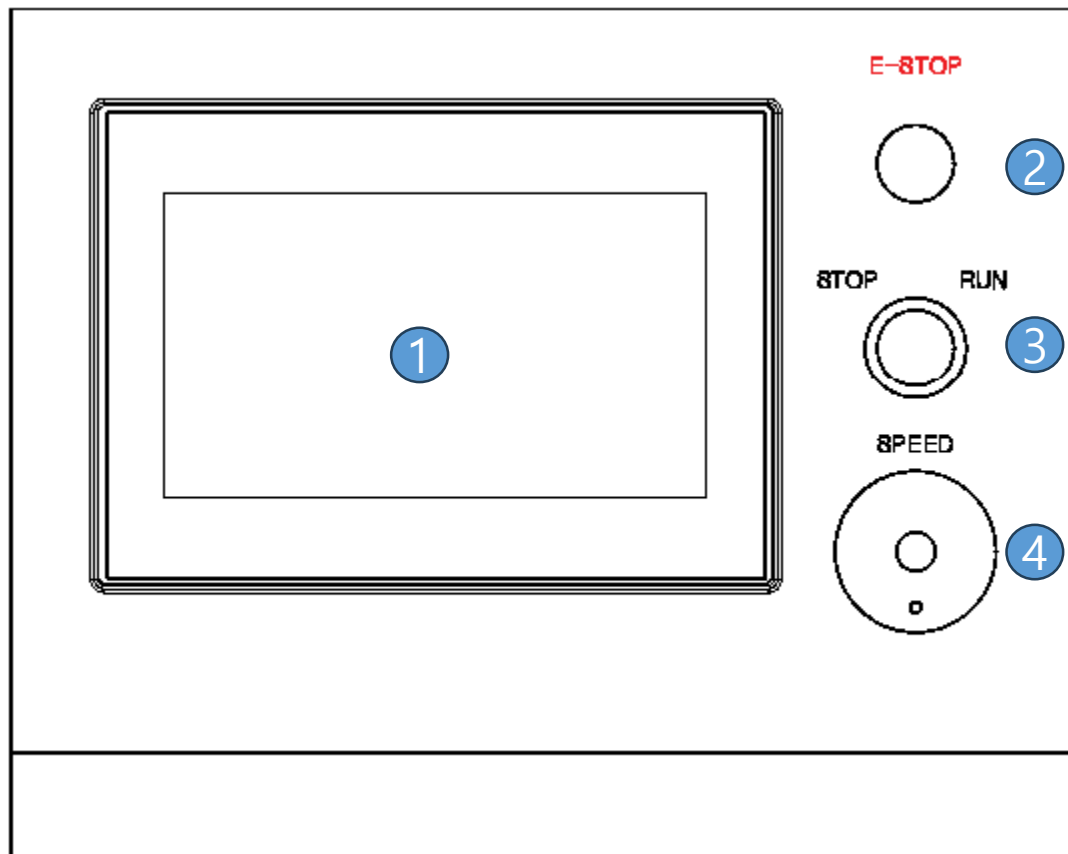


운전 터치패널 정면도

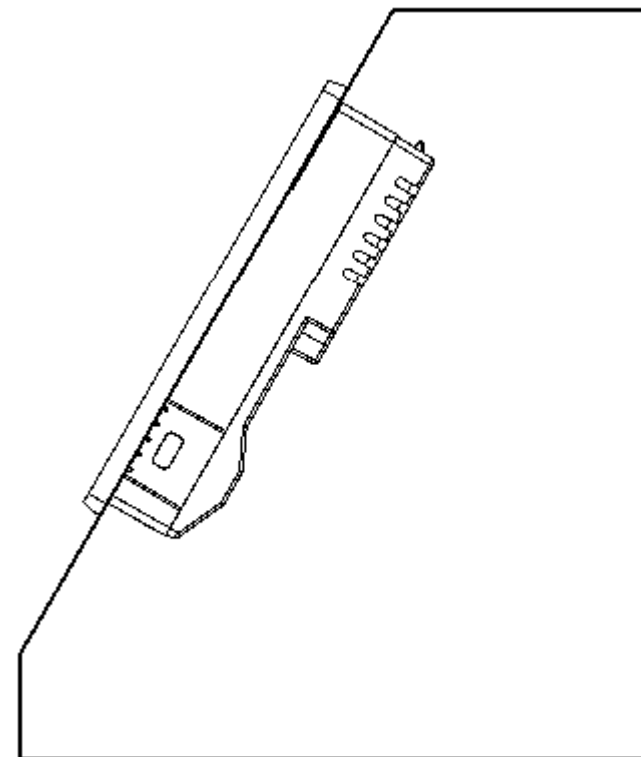
기능 설명

- ① 7인치 터치스크린
- ② 비상 스위치
- ③ 정지/운전 스위치
- ④ 모터 속도 조절

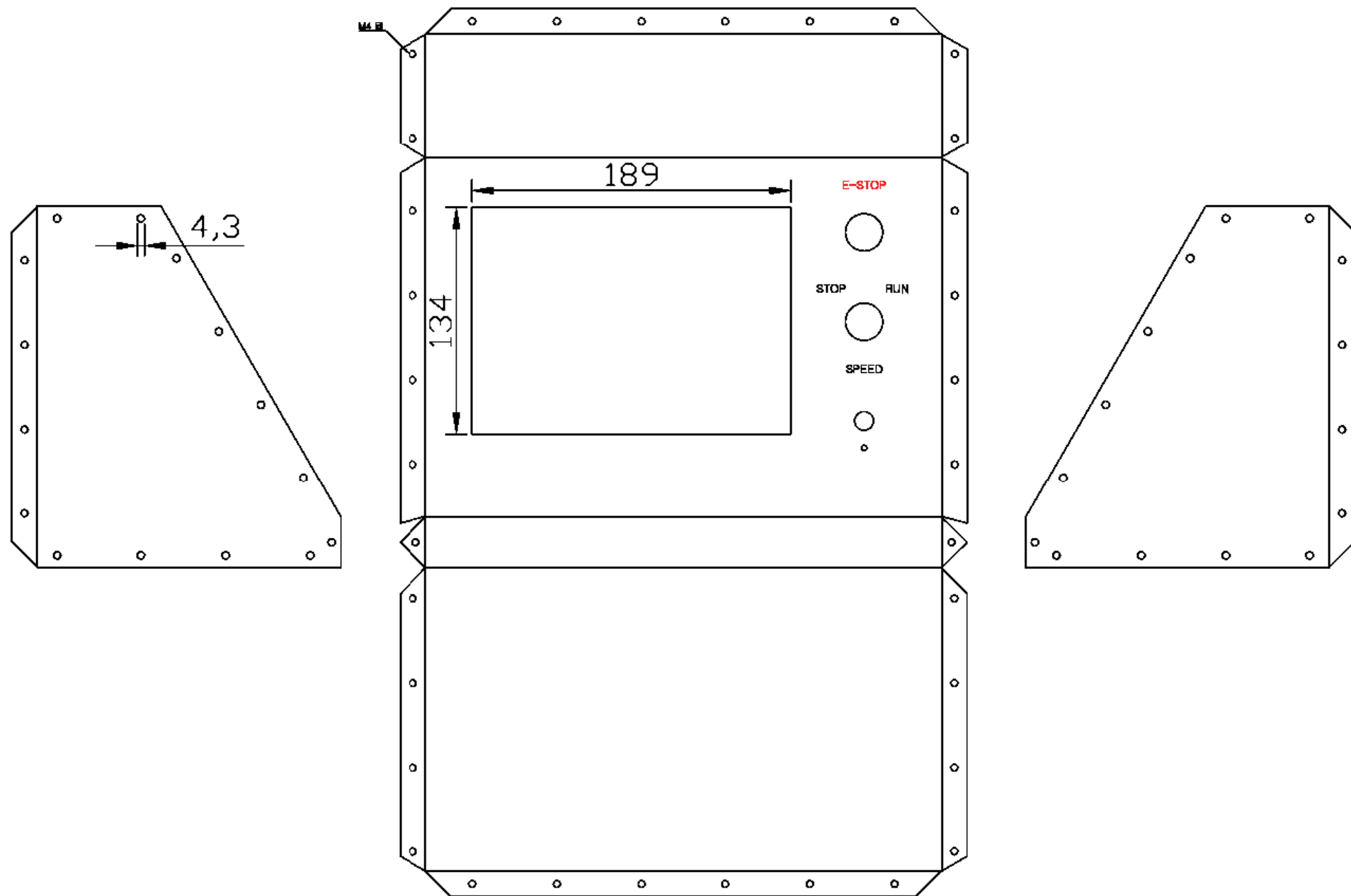
FRONT VIEW



SIDE VIEW



운전 터치패널 평면도



운전 터치패널 제어 화면

인버터 운전 상태

2024/ 6/18 19:17:42
CycleTime: 0.11 sec



MENU

인버터 운전 지령

RUNNING

FAULT

0 rpm

↑

↓

0

0

0

1단

2단

3단

INVERTER ALARM RESET

RUN

STOP

인버터 상태 표시

지령주파수: 0.0 HZ

출력주파수: 0.0 HZ

출력 RPM: 0 rpm

출력전류: 0.0 A

출력전압: 0.0 V

출력전력: 0.0 kW

출력토크: 0.0 %

DC Link: 0 V

인버터온도: 0 °C

Run Reference 00

0=PC Control

Freq' Reference 00

0=AI1

인버터 모터 정수

내 용	설정값
Max Frequency(HZ)	0.0
Motor Voltage(V)	0
Motor Frequency(HZ)	0.0
Motor Speed(Krpm)	0.00
Motor Current(A)	0.0
Motor Power(KW)	0.0
Current Limit(A)	0.0
DC-Brake Current(A)	0.0
DC-Brake Time(sec)	0.000
Field Weakng Pnt(HZ)	0.0
Zero Freq Volt(V)	0.00
Current Control Kp(%)	0.00

Active Fault 00

F00 No Fault